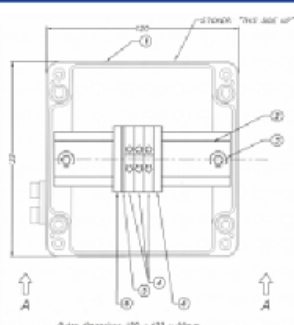


Simple installation overview for connecting Ri to costumer PLC

1



2



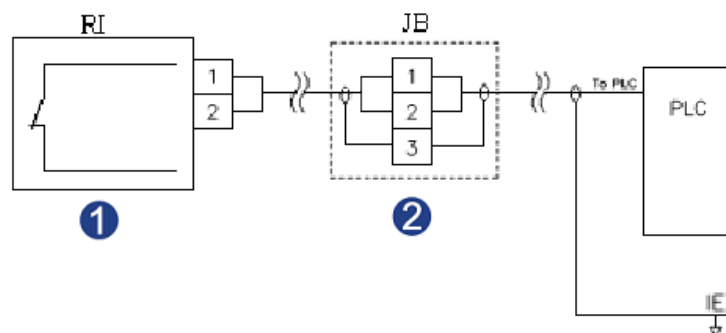
3

Customer PLC

4

Model	RI / RI2
Materials	Indicator: Copper (Cu) Substrate: Kapton (sealed envelope) Enclosure: Zamak 5
Process Temperature⁽¹⁾	-30 °C to +260 °C
Ambient Temperature	-40 °C to +65 °C
Available on Explosion Vent & Rupture Disc Models	(HI)-CV / (HI)-CV-S / (HI)-CV-CF / CV-(S)-I / CV-(S)-I-HT / Sani-V-(S) / EleGuard / Flex-V / RI / AD-V-RI
Electrical connection	Cable type: Belden 9463NH, length 3 m Conductor: 2x20AWG / 2x0.5mm ² tinned Cu Drain wire: 20 AWG tinned Cu Braid: Tinned Cu, 55% coverage Shield: Aluminum-Polyester, 100% coverage Overall diameter: 6.35 mm (Pg9) Jacket material: FRNG / Blue (RAL 5012) Flame resistance: IEC 332-3-C
ATEX approval RI ISSEP02ATEX047X II 1 G/D EEx ia IIC T6	Supply and signal circuit Voltage U _i = 28.4V Current I _i = 93mA Power P _i = 0.67W Inductance L _i = 5.6µH Capacitance C _i = 1.8nF
ATEX approval RI2 INERIS 07ATEX0014X II 1 G - Ex ia IIB T4 II 1 D - Ex iaD 20 T135°C	Supply and signal circuit Voltage U _i = 18V Current I _i = 93mA Power P _i = 0.67W Inductance L _i = 5.6µH Capacitance C _i = 1.8nF
CE approval Ingress Protection	IP65

5



3